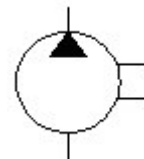
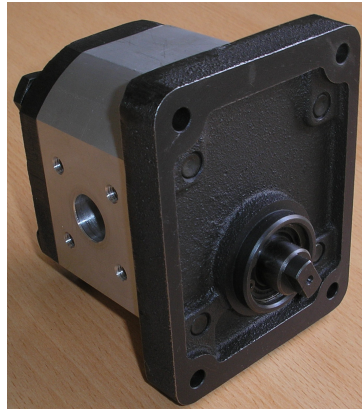


EICHER Gear Pumps

- High strength aluminum extruded body.
- Hardened and ground integral gear shaft.
- Special aluminum alloy bush bearing.
- Axially balanced for high volumetric efficiency in excess of 95%.



Rating

Graphic Symbol

Model Number	Geometric Displacement		Maximum Pressure Bar		Shaft Speed Range rpm		Weight Kg
	cm ³ /rev	LPM@ 1500 rpm	Continuous	Intermittent	Max.	Min.	
EIB200-084	8.4	12.6	200	225	3500	600	3.25 (Approx)

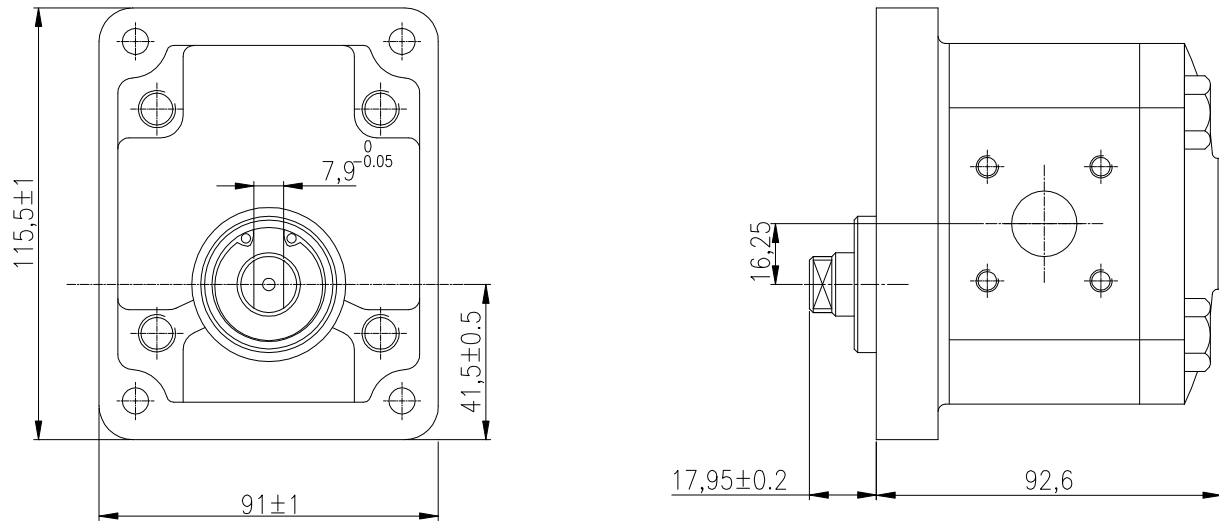
Model Number Designation

EIB200	-084	-G	-3	-F	-B	-R
Series	Size	Shaft	Mounting	Port	Drive Shaft Seal	Direction of Rotation Viewed From Shaft Side
EIB200: Eicher	084	G: Tang Shaft	3:European Rectangular (With ϕ 36.47 Spigot Mounting)	F: Flanged Port	B: Single Nitrile V: Single Viton	R: Clockwise

Example - EIB200-084-G-3-F-B-R

093:9.3cc/rev, G: Tang shaft, 3: European Rectangular flange (ϕ 36.47 Spigot Mounting), F: Flanged port, B-SingleNitrile.R: Clockwise

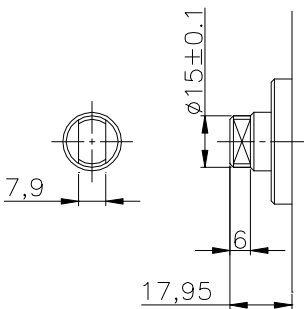
General Arrangement



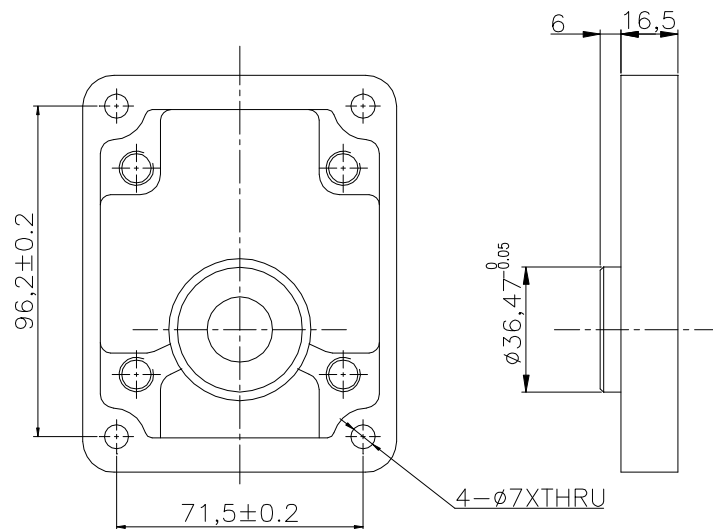
PUMP DETAILS SHOWN FOR CLOCKWISE ROTATION VIEWED FROM SHAFT SIDE

ALL DIMENSIONS ARE IN MM

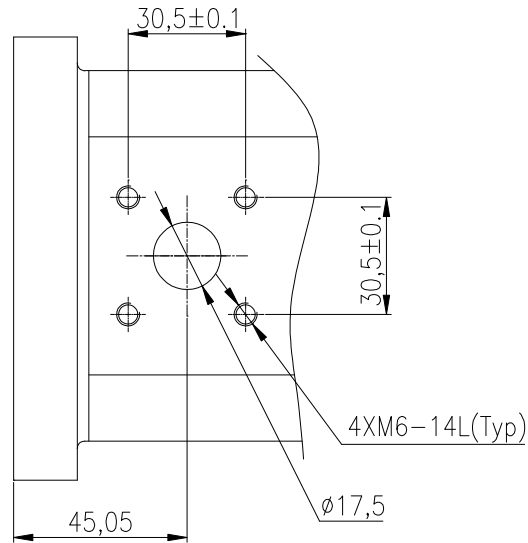
Shaft



Flange



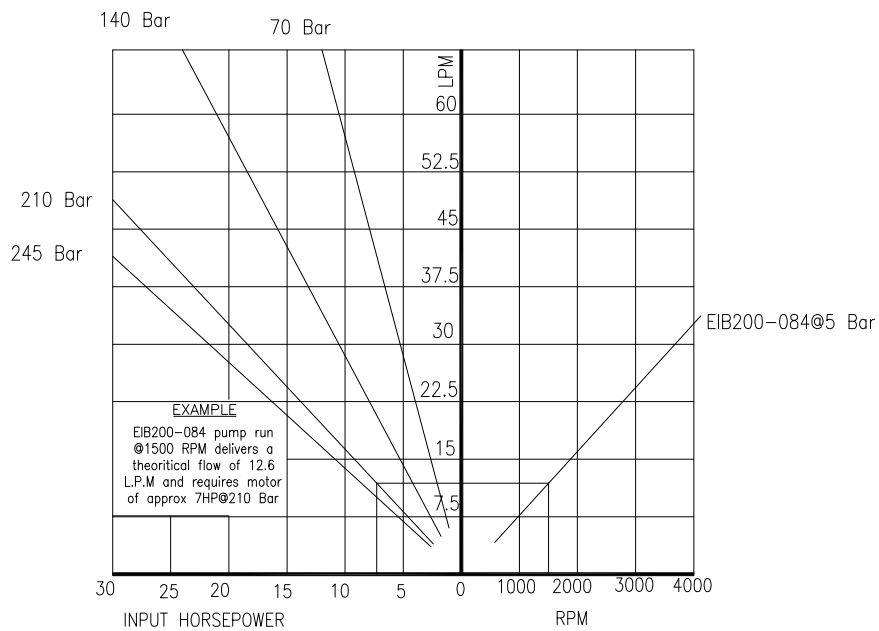
Port

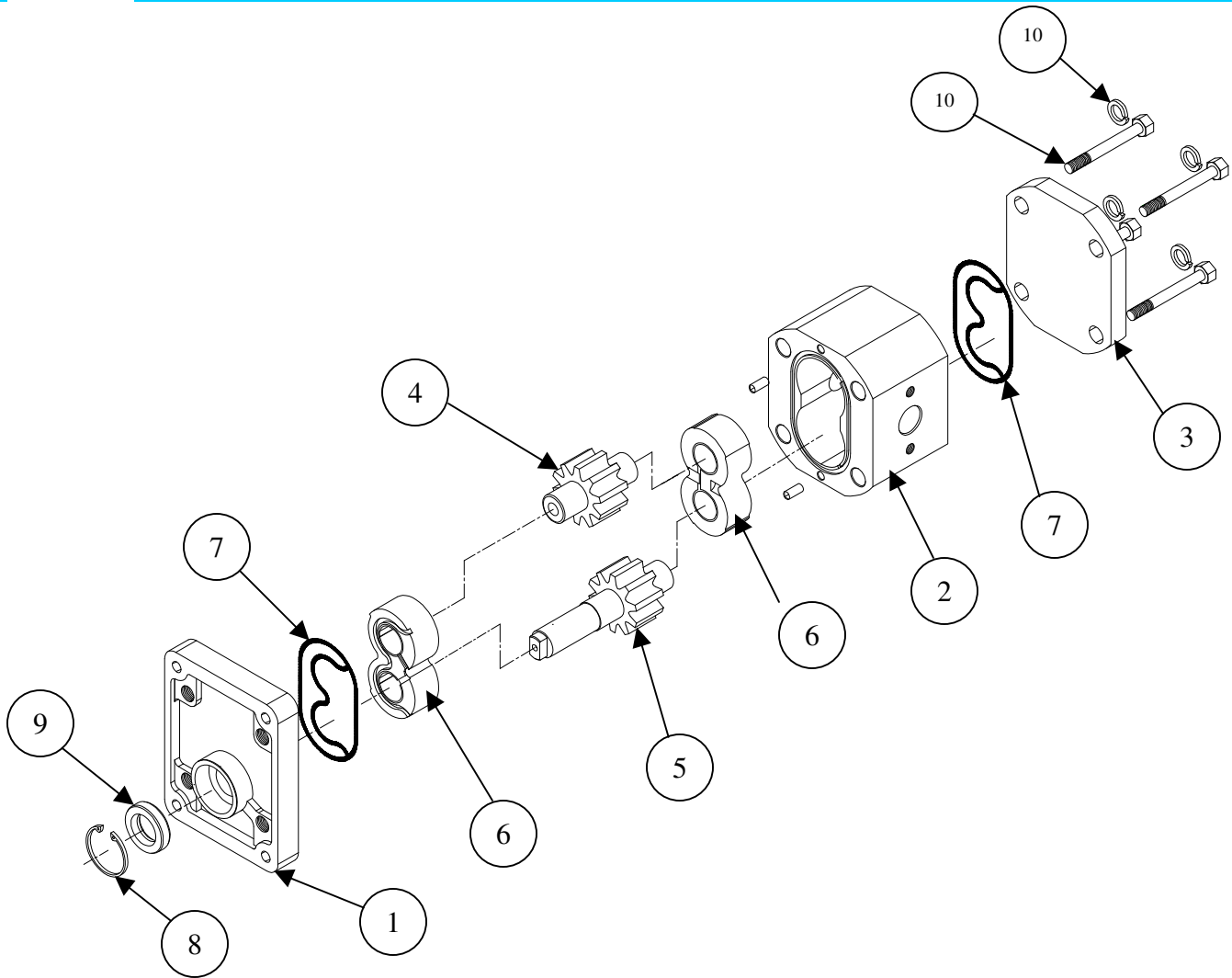


Seals: -

Nitrile (Temp.range: $-15^{\circ}\text{C}+80^{\circ}\text{C}$), Viton (Temp.range: $-10^{\circ}\text{C}+140^{\circ}\text{C}$).

Performance Chart





PART NO	DESCRIPTION	MATERIAL	QTY/ASSE
1	Shaft End Cover	Cast Iron	1
2	Body	Aluminum	1
3	Closed End Cover	Cast Iron	1
4	Driving Gear	Hardened Steel	1
5	Driven Gear	Hardened Steel	1
6	Bearing Bush	Al alloy	1
7	Body End Seal	Nitrile/Viton	2
8	Circlip	Spring Steel	1
9	Oil Seal	Nitrile/Viton	1
10	Bolt	High Tensile Steel	4
11	Washer	Spring Steel	4
12	Key	Steel	1