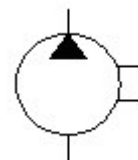


PG0-Series Gear Pumps

- High strength aluminum extruded body.
- Hardened and ground integral gear shaft.
- Special aluminum alloy bush bearing.
- Axially balanced for high volumetric efficiency in excess of 95%.



Graphic Symbol

Rating

Model Number	Geometric Displacement cm ³ /rev	Flow Rate LPM At 1500rev/min	Maximum Pressure Bar		Shaft Speed range rpm		Weight Kg
			Continuous	Intermittent	Max	Min	
PG0A200-066	0.66	1.0	180	220	4500	1000	2 (Approx)
PG0A200-100	1.0	1.5	200	240	4500	1000	
PG0A200-160	1.6	2.4	200	240	4000	800	
PG0A200-210	2.1	3.2	200	240	4000	800	
PG0A200-320	3.2	4.8	200	240	3500	600	
PG0A200-420	4.2	6.3	180	220	3500	600	
PG0A200-530	5.3	8.0	180	220	3500	600	
PG0A200-640	6.4	9.6	160	200	3500	600	

Model Number Designation

PG0A200	-066	-S	-1	-S	-B	-R
Series	Size	Shaft	Mounting	Port	Drive Shaft Seal	Direction of Rotation Viewed From Shaft Side
PG0A200	066	S: Straight G: Tang*	1: SAE 'A'-2 Bolt 2: SAE 'AA'-2 Bolt	S: SAE 'O' Ring Port P: BSPF Port	B: Single Nitrile V: Single Viton	R: Clockwise L: Counter clockwise
	100					
	160					
	210					
	320					
	420					
	530					
640						

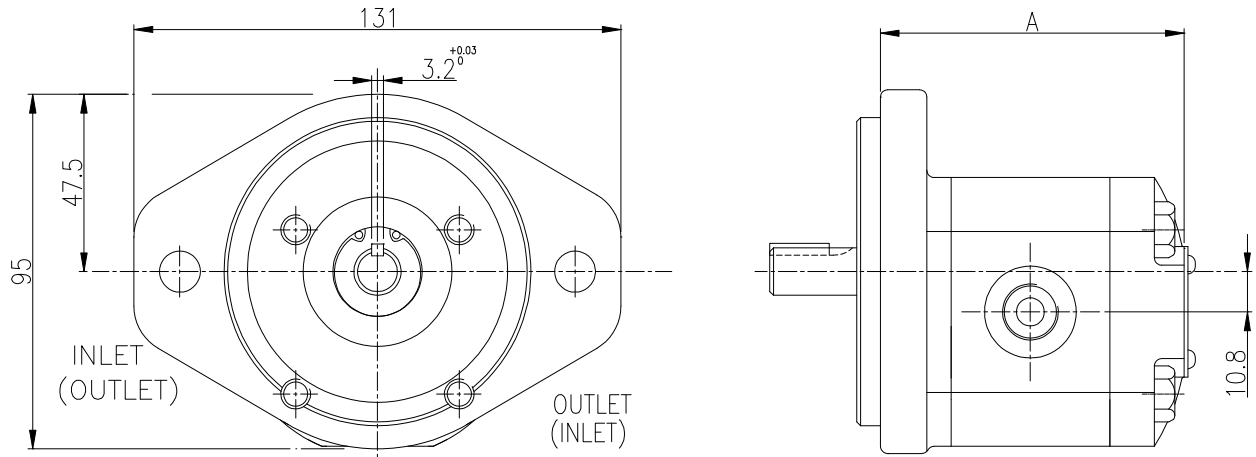
Example – PG0A200-066-S-1-S-B-R

066: 0.66cc/rev, S: Straight shaft, 1: SAE 'A'-2 Bolt flange, S: SAE 'O' Ring Port B: Single Nitrile R: Clockwise.

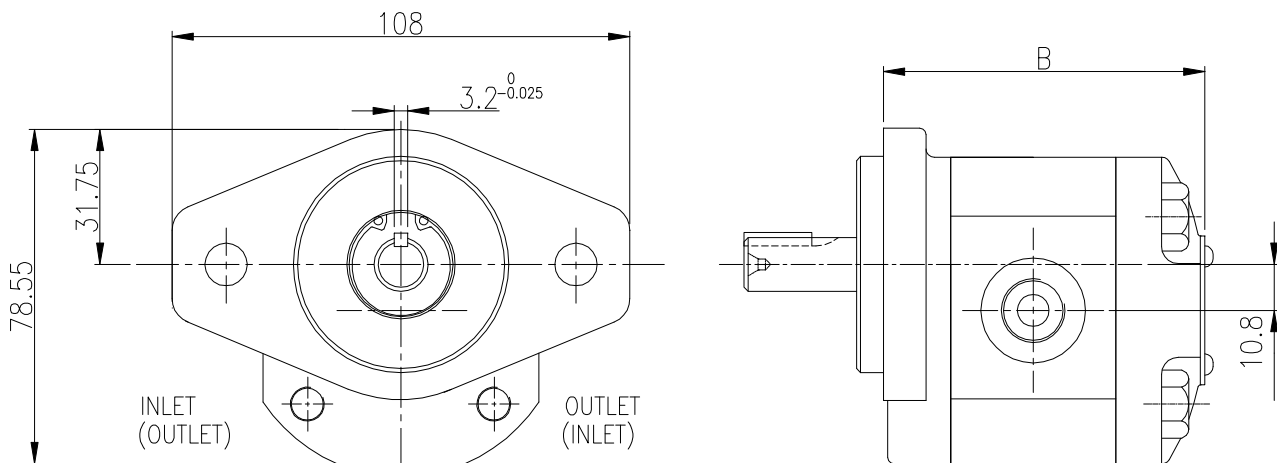
*For Tang consult factory.

General Arrangement

SAE 'A'-2 Bolt Mounting



SAE 'AA'-2 Bolt Mounting



Model No	A	B
PG0A200-066	70.5	67.3
PG0A200-100	71.5	68.3
PG0A200-160	73.4	70.2
PG0A200-210	75.25	72.05
PG0A200-320	79	75.8
PG0A200-420	82.75	79.55
PG0A200-530	86.75	83.55
PG0A200-640	90.25	87.05

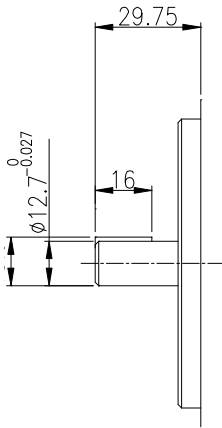
PUMP DETAILS SHOWN FOR CLOCKWISE ROTATION VIEWED FROM SHAFT SIDE

ALL DIMENSIONS ARE IN MM

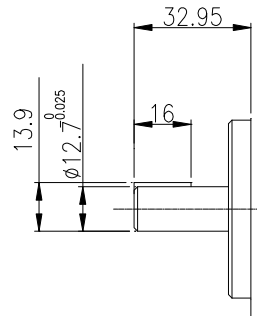
Shaft

Straight (Model code: S)

For SAE 'A'-2 Bolt Mounting



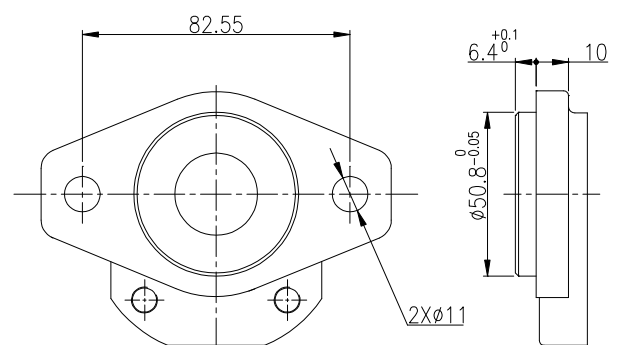
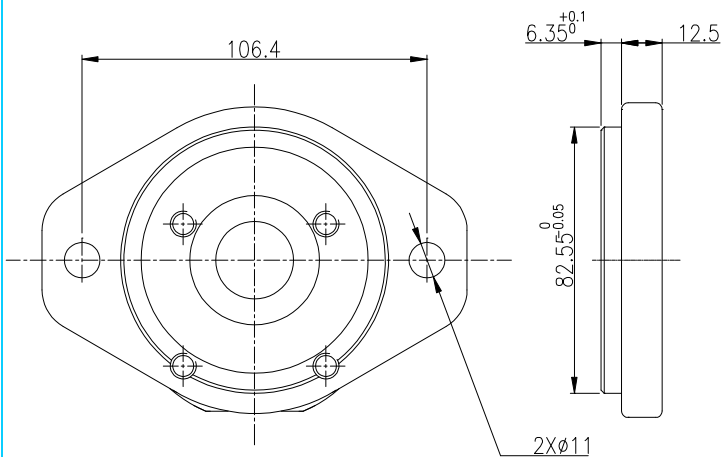
For SAE 'AA'-2 Bolt Mounting



Flange

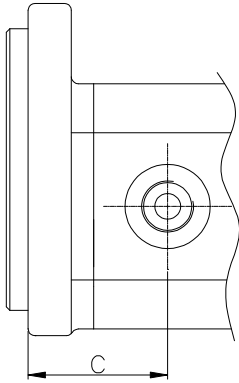
SAE 'A'-2 Bolt Flange (Model code: 1)

SAE 'AA'-2 Bolt Flange (Model code: 2)

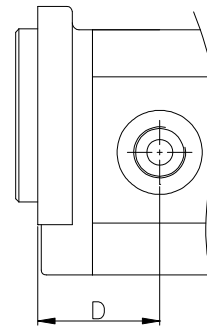


Ports

For SAE 'A'-2 Bolt Flange



For SAE 'AA'-2 Bolt Flange

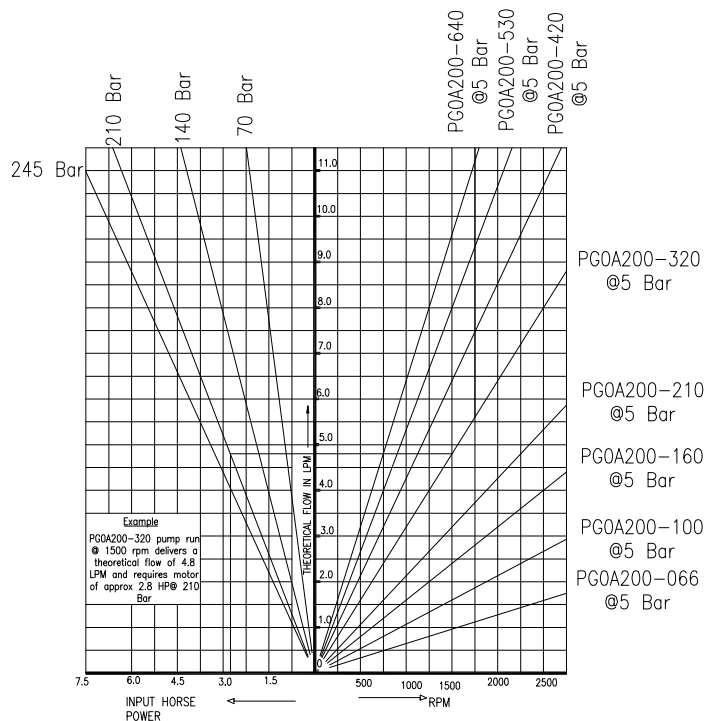


Model No	BSPF Port		SAE'O' Ring Port		C	D
	Inlet	Outlet	Inlet	Outlet		
PG0A200-066	3/8" BSP	3/8" BSP	9/16"-18 UNF	9/16"-18 UNF	34.27	31.00
PG0A200-100	3/8" BSP	3/8" BSP	9/16"-18 UNF	9/16"-18 UNF	34.77	31.57
PG0A200-160	3/8" BSP	3/8" BSP	9/16"-18 UNF	9/16"-18 UNF	35.72	32.52
PG0A200-210	3/8" BSP	3/8" BSP	3/4"-16 UNF	9/16"-18 UNF	36.65	33.45
PG0A200-320	3/8" BSP	3/8" BSP	3/4"-16 UNF	9/16"-18 UNF	38.52	35.32
PG0A200-420	1/2" BSP	1/2" BSP	3/4"-16 UNF	9/16"-18 UNF	40.40	37.20
PG0A200-530	1/2" BSP	1/2" BSP	7/8"-14 UNF	3/4"-16 UNF	42.40	39.20
PG0A200-640	1/2" BSP	1/2" BSP	7/8"-14 UNF	3/4"-16 UNF	44.15	40.95

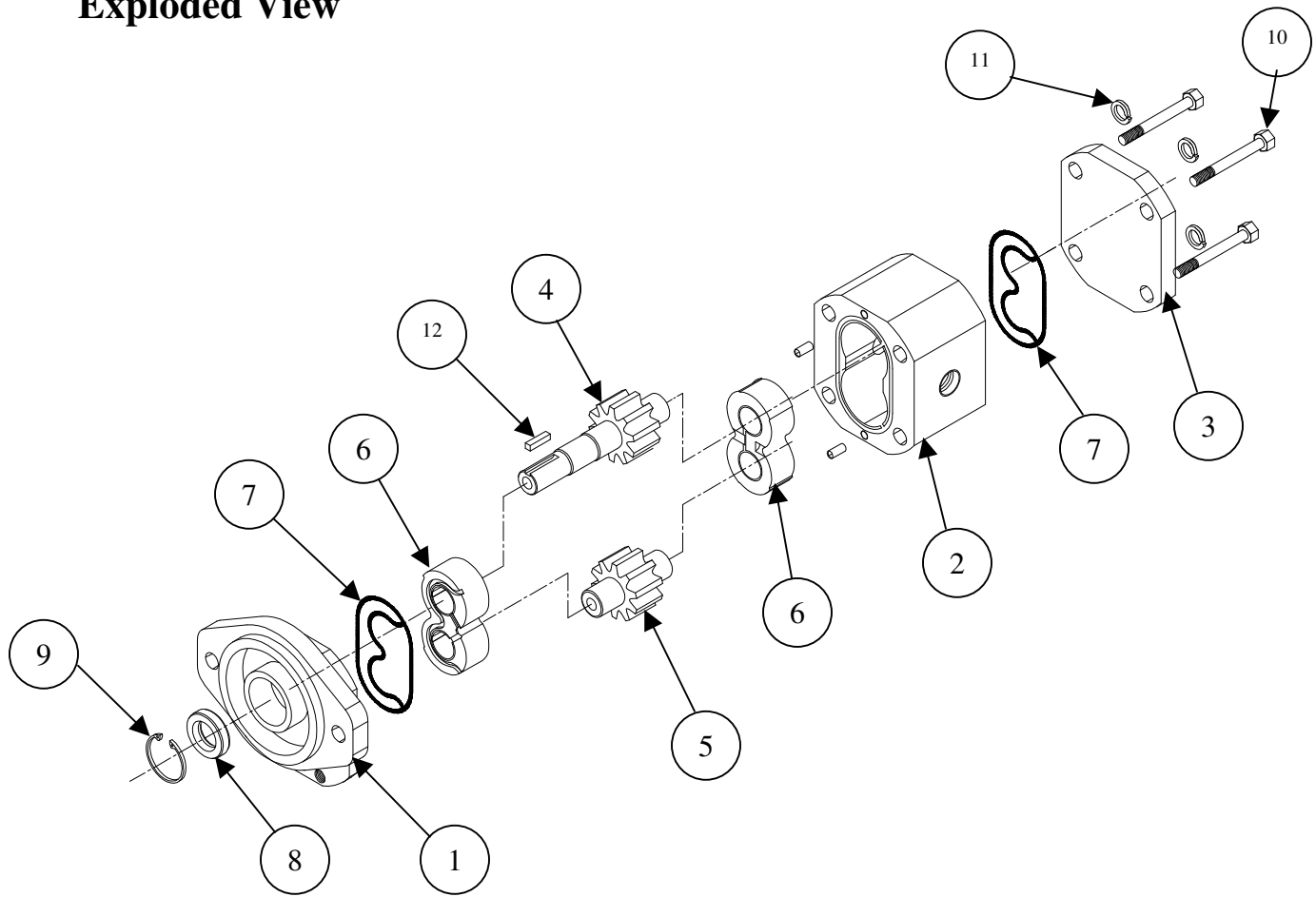
Seals: -

Nitrile (Temp.range: -15°C+80°C), Viton (Temp.range: -10°C+140°C).

Performance Chart



Exploded View



PART NO	DESCRIPTION	MATERIAL	QTY/ASSE
1	Shaft End Cover	Cast Iron	1
2	Body	Aluminum	1
3	Closed End Cover	Cast Iron	1
4	Driving Gear	Hardened Steel	1
5	Driven Gear	Hardened Steel	1
6	Bearing Bush	Al alloy	1
7	Body End Seal	Nitrile/Viton	2
8	Oil Seal	Nitrile/Viton	1
9	Circlip	Spring Steel	1
10	Bolt	High Tensile Steel	4
11	Washer	Spring Steel	4
12	Key	Steel	1