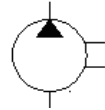


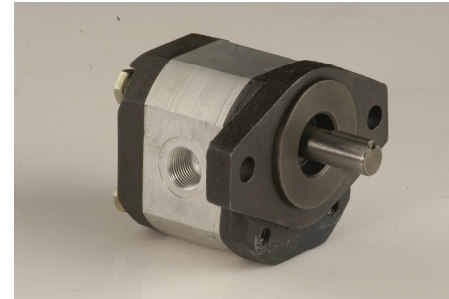
**PG0E-Series Gear Pumps**

**Pressures upto 3500 PSI**  
**Flows upto 6 GPM**  
**Speeds upto 4500 RPM**

**Graphical Symbol**



- High strength aluminum extruded body.
- Hardened and ground integral gear shaft.
- Special aluminum alloy bush bearing.
- Axially balanced for high volumetric efficiencies of 95%.



**Rating**

Model Number	Geometric Displacement		Flow Rate At 1750 rev/min	Maximum Pressure				Shaft Speed range rpm		Weight (Approx)
	cm <sup>3</sup> /rev	In <sup>3</sup> /rev		Continuous		Intermittent		Max	Min	
			GPM	Bar	PSI	Bar	PSI			Kg (Lb)
PG0E-066	0.66	0.040	0.30	180	2600	220	3200	4500	1000	1.5(3.3)
PG0E-100	1.0	0.060	0.50	207	3000	240	3500	4500	1000	1.5(3.3)
PG0E-160	1.6	0.097	0.75	207	3000	240	3500	4000	800	1.5(3.3)
PG0E-210	2.1	0.130	1.00	207	3000	240	3500	4000	800	1.5(3.3)
PG0E-320	3.2	0.195	1.50	207	3000	240	3500	3500	600	1.6(3.5)
PG0E-420	4.2	0.256	2.00	180	2600	220	3200	3500	600	1.6(3.5)
PG0E-530	5.3	0.315	2.50	180	2600	220	3200	3500	600	1.6(3.5)
PG0E-640	6.4	0.400	3.00	165	2400	207	3000	3500	600	1.7(3.7)

**Model Number Designation**

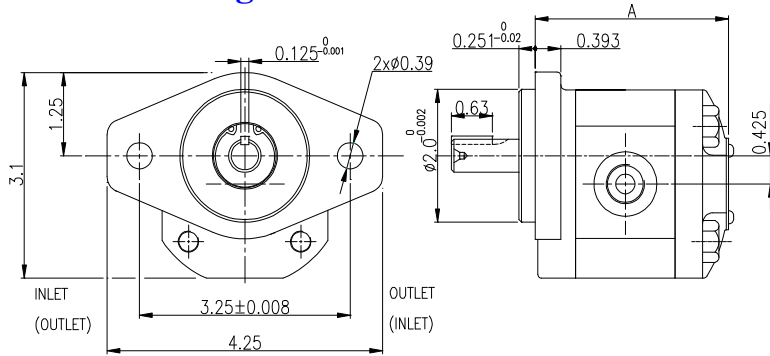
PG0E	-066	-S	-1	-S	-B	-R
Series	Size	Shaft	Mounting	Port	Drive Shaft Seal	Direction of Rotation Viewed From Shaft Side
PG0E	066	S: Straight P: Spline* G: Tang*	1: SAE "AA"-2 Bolt	S: SAE 'O' Ring Port.	B: Single Nitrile V: Single Viton	R: Clockwise L: Counter Clock Wise
	100					
	160					
	210					
	320					
	420					
	530					
640						

**Example – PG0E-066-S-1-S-B-R**

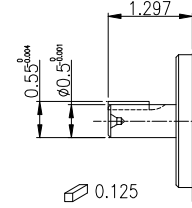
066: 0.66cc/rev, S: Straight shaft, 1: SAE"AA"-2 Bolt flange, S: SAE'O'Ring Port B: Single Nitrile R: Clockwise.

\*For Spline & Tang Shaft Consult Factory

## General Arrangement



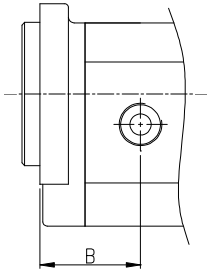
## Shaft



ALL DIMENSIONS ARE IN INCHES

## Ports

PUMP DETAILS SHOWN FOR CLOCKWISE ROTATION VIEWED FROM SHAFT SIDE

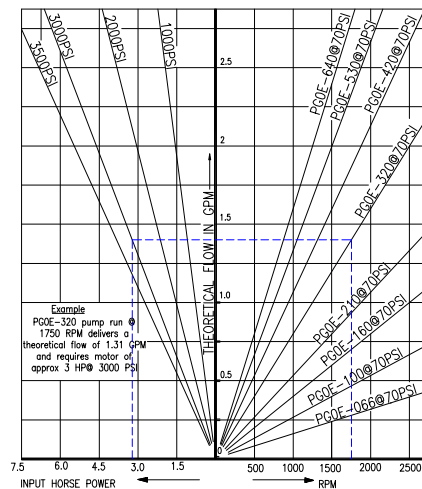


Model No	Inlet	Outlet	A	B
PG0E-066	9/16"-18 UNF	9/16"-18 UNF	2.65	1.22
PG0E-100	9/16"-18 UNF	9/16"-18 UNF	2.69	1.24
PG0E-160	9/16"-18 UNF	9/16"-18 UNF	2.76	1.28
PG0E-210	3/4"-16 UNF	9/16"-18 UNF	2.84	1.32
PG0E-320	3/4"-16 UNF	9/16"-18 UNF	2.98	1.39
PG0E-420	3/4"-16 UNF	9/16"-18 UNF	3.13	1.46
PG0E-530	7/4"-14 UNF	3/4"-16 UNF	3.29	1.54
PG0E-640	7/4"-14 UNF	3/4"-16 UNF	3.43	1.61

## Seals

Nitrile (Temp.range: -60° F+175° F), Viton (Temp.range: -50°F+285° F).

## Performance Chart



Manufactured By:  
**Yuken India Limited**  
 #16, Whitefield Road,  
 Whitefield, Bangalore-560 066.India  
 Tel: +91-80-28452262/479  
 Fax: +91-80-28452261. E-mail: [enquiry@yuken.India.com](mailto:enquiry@yuken.India.com)

Distributed in US by:  
**Neelan Controls, Inc**  
 1035 Hudson Court.  
 Bartlett, IL-60103  
 Tel: 630-736-0030  
 Fax: 630-736-0330