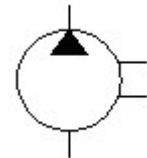
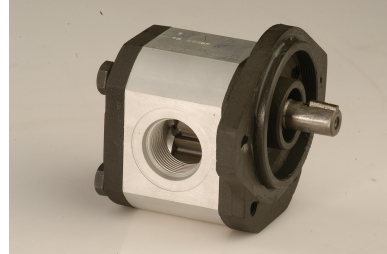


## PG1-Series Gear Pumps

- High strength aluminum extruded body.
- Hardened and ground integral gear shaft.
- Special aluminum alloy bush bearing.
- Axially balanced for high volumetric efficiency in excess of 95%.



### Rating

### Graphic Symbol

Model Number	Geometric Displacement cm <sup>3</sup> /rev	Flow Rate LPM At 1500rev/min	Maximum Pressure Bar		Shaft Speed Range rpm		Mass in Kg
			Continuous	Intermittent	Max	Min	
PG1B200-066	6.6	10.0	210	235	3500	600	3.5 (Approx)
PG1B200-084	8.4	12.6	210	235	3500	600	
PG1B200-093	9.3	14.0	210	235	3500	600	
PG1B200-109	10.9	16.4	210	235	3000	500	
PG1B200-120	12.0	18.0	210	235	3000	500	
PG1B200-133	13.3	20.0	190	215	3000	500	
PG1B200-166	16.6	25.0	180	205	3000	500	
PG1B200-186	18.6	28.0	180	205	3000	500	
PG1B200-226	22.6	34.0	170	195	2500	500	
PG1B200-267	26.7	40.0	170	195	2500	500	

### Model Number Designation

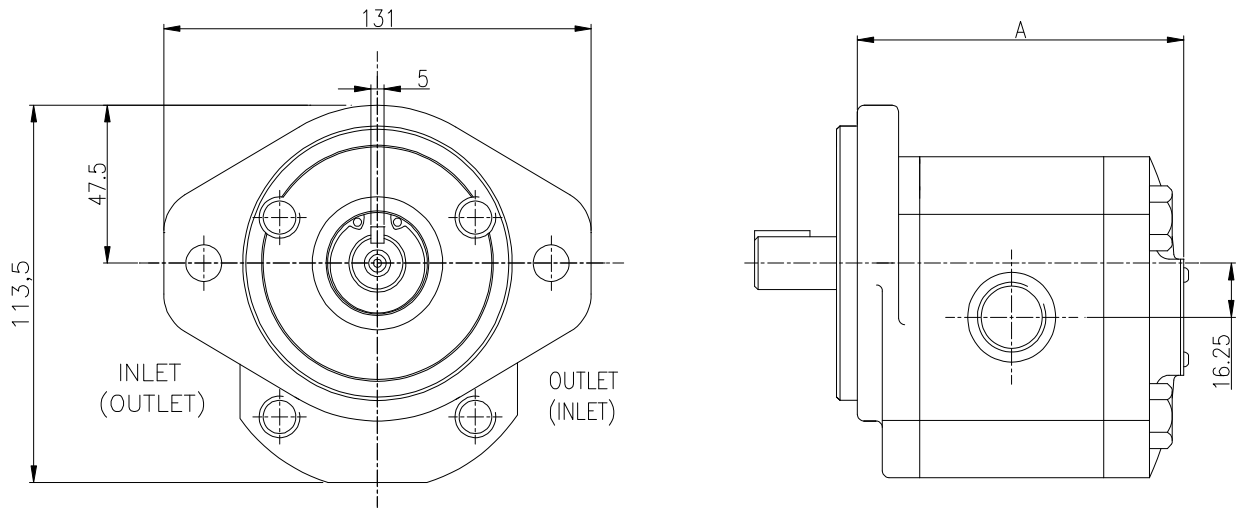
PG1B200	-066	-S	-1	-P	-B	-R
Series	Size	Shaft	Mounting	Port	Drive Shaft Seal	Direction of Rotation Viewed From Shaft Side
PG1B200	066	S: Straight	1: SAE 'A' 2 Bolt	P: BSPF Port	B: Single Nitrile	R: Clockwise L: Counter Clockwise
	084					
	093					
	109					
	120					
	133					
	166					
	186					
	226					
267						

#### Example-PG1B200-066-S-I-P-B-R

066: 6.6cc/rev, S: Straight shaft, 1: SAE 'A' 2-bolt flange, P: BSPF port, B: Single Nitrile, R: Clockwise

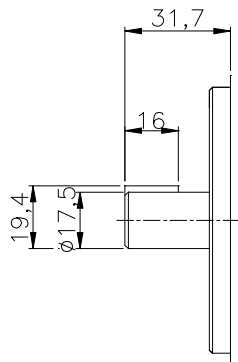
## PG1-Series Gear Pumps

### General Arrangement SAE 'A'-2 Bolt Mounting

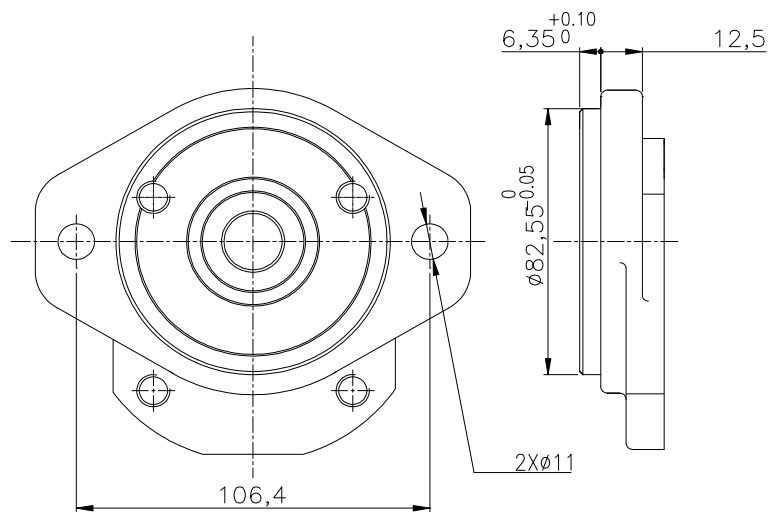


PUMP DETAILS SHOWN FOR CLOCKWISE ROTATION VIEWED FROM SHAFT SIDE  
**ALL DIMENSIONS ARE IN MM**

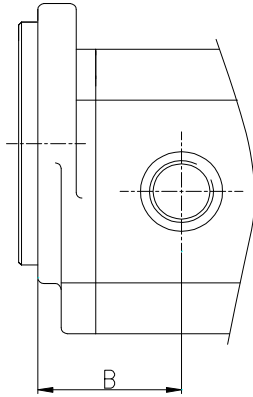
### Shaft



### Flange



### Port

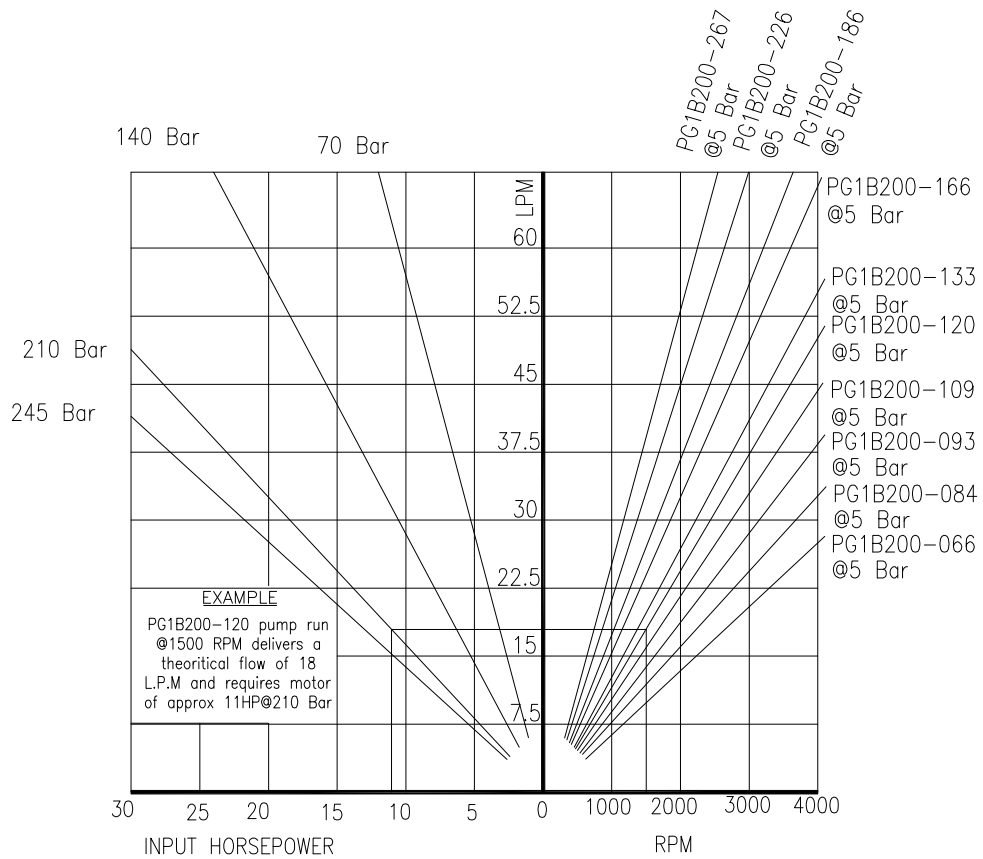


Model No	BSPF Port		A	B
	Inlet	Outlet		
PG1B200-066	1/2"	1/2"	88.4	43.2
PG1B200-084	1/2"	1/2"	91.1	45.55
PG1B200-093	1/2"	1/2"	92.4	47.2
PG1B200-109	1/2"	1/2"	94.8	49.4
PG1B200-120	3/4"	3/4"	96.4	51.2
PG1B200-133	3/4"	3/4"	98.6	53.3
PG1B200-166	3/4"	3/4"	103.4	56.7
PG1B200-186	3/4"	3/4"	106.6	59.3
PG1B200-226	3/4"	3/4"	112.4	63.2
PG1B200-267	3/4"	3/4"	118.6	67.3

### Seals: -

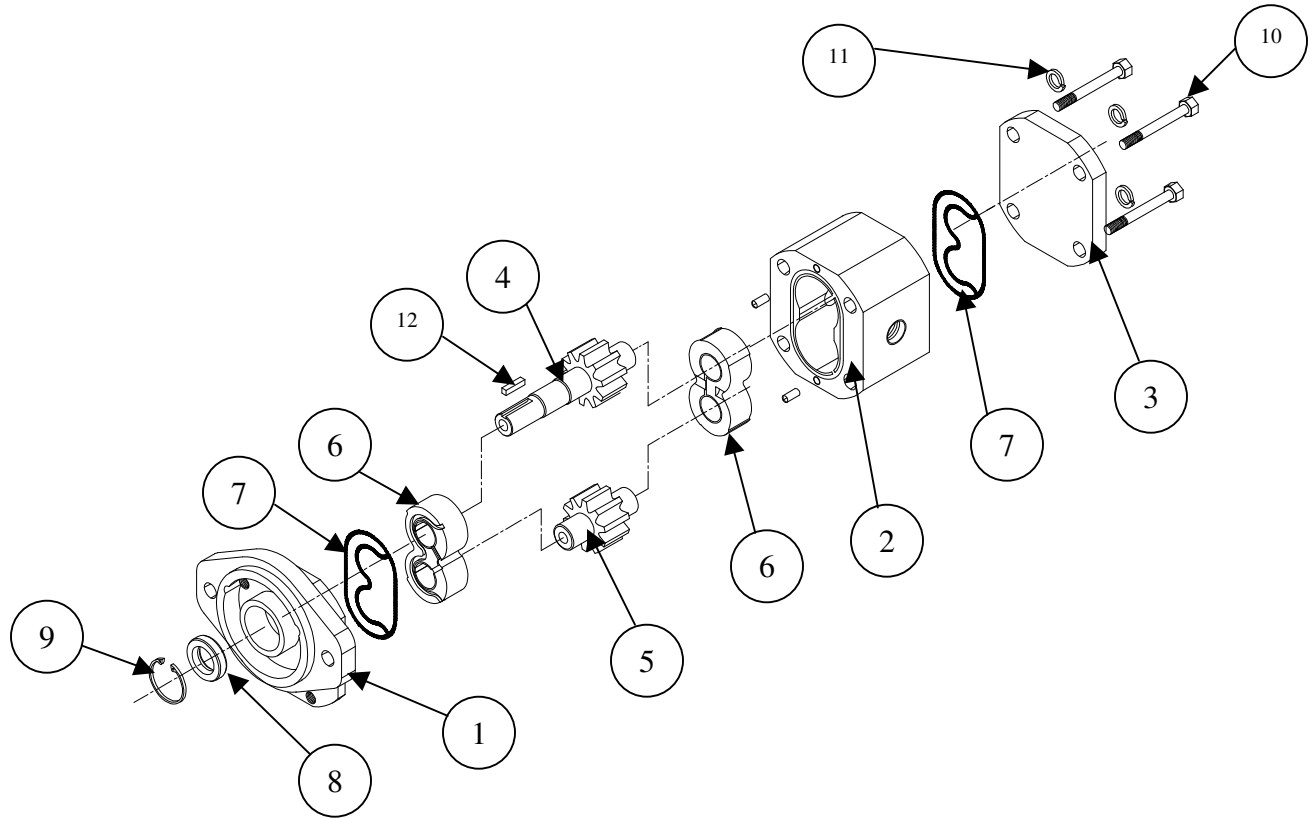
Nitrile (Temp.range: -15°C+80°C)

### Performance Chart



## PG1-Series Gear Pumps

### Exploded view



PART NO	DESCRIPTION	MATERIAL	QTY/ASSE
1	Shaft End Cover	Cast Iron	1
2	Body	Aluminum	1
3	Closed End Cover	Cast Iron	1
4	Driving Gear	Hardened Steel	1
5	Driven Gear	Hardened Steel	1
6	Bearing Bush	Al alloy	1
7	Body End Seal	Nitrile/Viton	2
8	Oil Seal	Nitrile/Viton	1
9	Circlip	Spring Steel	1
10	Bolt	High Tensile Steel	4
11	Washer	Spring Steel	4
12	Key	Steel	1